

## "The Housebarns of America"

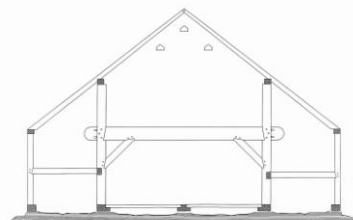
Saturday Aug. 25, 3:00 pm.  
Schenectady County Historical Society  
32 Washington Ave, Schenectady

**Robert W. Sherman** has been interested in Ethnic, Rural & Vernacular Architecture since the 1960's when he was a Field Representative for the State Historical Society of Wisconsin. Doing a survey for the future Museum of "Old World Wisconsin", looking for the ethnic and vernacular architecture of the State's early settlers, he found a number of Housebarns in the German area of Eastern Wisconsin; one was a Bohemian, log Housebarn.



He began to search for Housebarns throughout the Midwest and has recorded many examples, including; limestone Housebarns in Iowa, stone, log and framed Housebarns in Illinois, a half-timbered Housebarn in Missouri, and Housebarns in Minnesota, the Dakotas, North Carolina, and even in Manitoba. This exploration of vernacular architecture is also a legacy of ethnic settlement patterns. These Housebarns mark the first American generation homesteads of many Finnish, German, Czech, Russian, and Mennonite families.

**Robert W. Sherman**, of Springfield, Illinois, continues to search out interesting barns and farmsteads whenever he travels, and he is a member of many Barn Preservation Societies and Networks. He gives barn lectures on various barn related topics and leads barn tours in the Midwest. He is currently working on two publications. "**The Great Barns of Illinois, from Log to Stone**" and "**The Housebarns of America**" He keeps current an annotated bibliography of books about barns for the National Barn Alliance's web page. He is a member of the Sangamon County Preservation Commission and Dutch Barn Preservation Society. He is a Board Member of the Illinois Barn Alliance and the National Barn Alliance. Sponsored by the Dutch Barn Preservation Society [www.dutchbarns.org](http://www.dutchbarns.org) and the National Barn Alliance [www.barnalliance.org](http://www.barnalliance.org)



DUTCH BARN PRESERVATION SOCIETY

